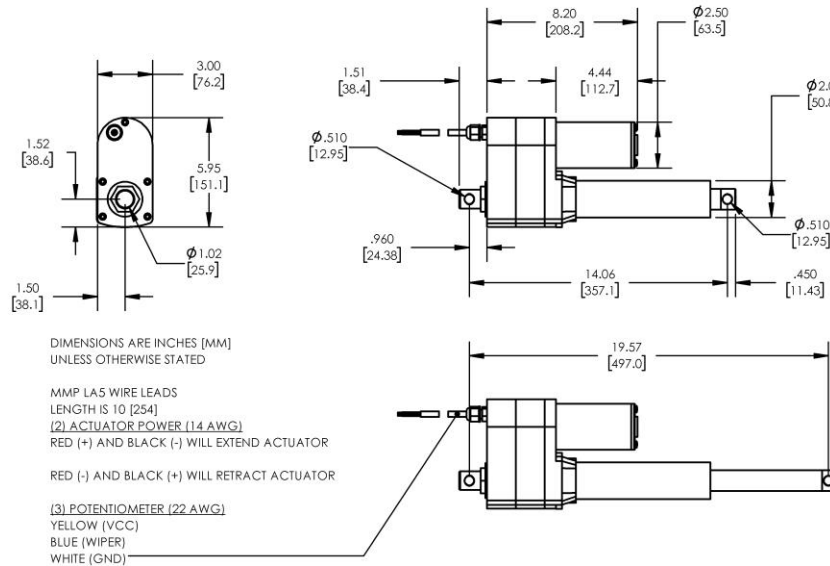




DC LINEAR ACTUATOR
 • IP65 INGRESS PROTECTION
 • BUILT-IN LIMIT SWITCHES AT EACH END OF TRAVEL
 • ACME SCREW (ANTI-BACKDRIVING)

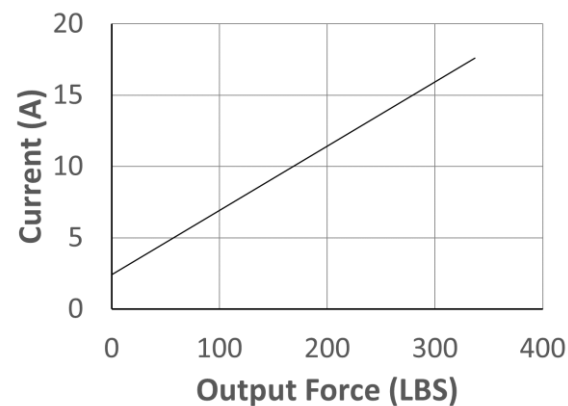
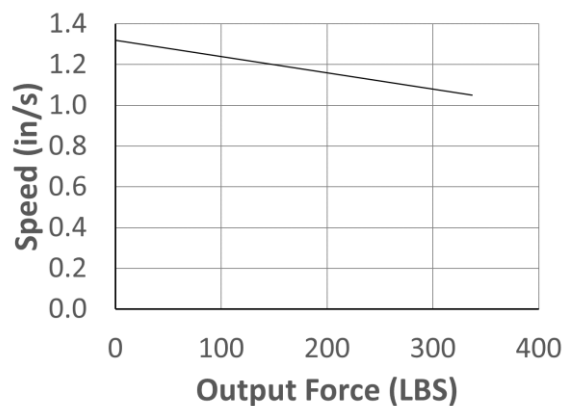
Model Number:

MMP LA5-12V-10-A-150-P



PERFORMANCE PARAMETERS	VALUE	UNITS	TOLERANCE
Rated DC Voltage	12	VDC	----
Gear Ratio	10:1	----	----
Rated Force Capacity	337 (1500)	LBS (N)	MAX
Rated Current (at rated force capacity)	17.6	AMPERES	MAX
Rated Stroke Speed (at rated force capacity)	1.05 (26.7)	IN/SEC (MM/SEC)	± 10%
Stroke Speed at No-Load	1.32 (33.5)	IN/SEC (MM/SEC)	± 10%
Static Load Capacity	1012 (4500)	LBS (N)	MAX
Maximum Recommended Duty	25%	----	MAX
Minimum Ambient Operating Temperature Range	-13 (-25)	°F (C)	MIN
Maximum Ambient Operating Temperature Range	149 (65)	°F (C)	MAX
Actuator Resistance Stroke Range (BLU-WHT)	9	kΩ	± 2
Actuator Full Resistance (YLW - WHT)	10	kΩ	± 0.5

PERFORMANCE CURVES:



• OPTIONAL MOUNTING BRACKET OPTION AVAILABLE – [FOLLOW THIS LINK FOR DETAILS](#)

MIDWEST MOTION PRODUCTS, INC

DESIGN, MANUFACTURING & DISTRIBUTION - MOTION CONTROL EQUIPMENT

www.midwestmotion.com

email: sales@midwestmotion.com